



Hybrid Inverter

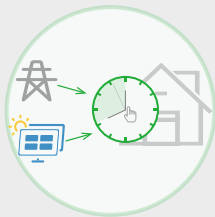
Single Phase: Hyper-3680/Hyper-5000

For new photovoltaic systems, the LIVOLTEK hybrid solution is a wise choice to improve your energy storage and utilization. Featuring a compact design, robust safety features, and superior performance, the LIVOLTEK hybrid bi-directional inverter can be perfectly adapted to residential and small businesses' self-consumption with battery storage. Its integrated backup power function and automatic activation in the event of power failure enable you to enjoy energy independence and maximize your solar investment through the export power control feature and time of use shifts for reduced electricity bills. Additionally, its modular scalable offers the flexibility to start small and expandable as your needs grow.

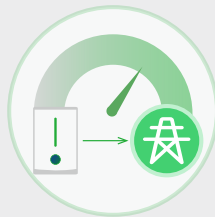


Features

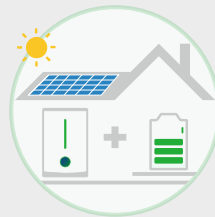
- 24/7 local and remote monitoring
- High charging & discharging capacity
- Fanless design, quiet and long lifespan
- 150% oversized, 150% yield
- All-in-one & split application optional
- Power non-critical loads & critical loads



Flexible Setting for Charge



Export Control Function



Compatible with Lithium Battery



Compatible with High-current PV Modules

Compatible Products



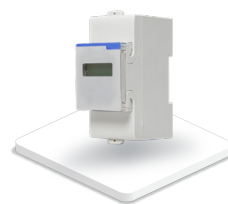
Residential Lithium Battery



Smart EV Charger



PSD200-FI Dongle



Smart Meter



Monitoring System

Specifications

Model	Hyper-3680	Hyper-5000
Max. PV Input Power	5520Wp	7500Wp
Max. PV Input Voltage	600V	
Nominal DC Input Voltage	360V	
MPPT Voltage Range	125~550V	
No. of MPPTs/Strings per MPPT	2 / 1	
Max. Input Current	14/14A	
Max. Short Circuit Current	17.5/17.5A	
AC Output @ Grid		
Nominal AC Power	3680W	5000W
Max. Apparent Output Power	3680VA	5500VA
Nominal AC Voltage	220V/230V/240V	
Nominal AC Voltage Range	186~290V	
AC Frequency	50Hz/60Hz ±5	
Max. AC Current	16.0A	23.9A
THDi, Rated Power	<3%	
Power Factor	~1 (Adjustable from 0.8 Leading to 0.8 Lagging)	
EPS Output @ Off Grid		
Nominal EPS Power	3680W	5000W
EPS Peak Power	1.1 x Pnom, 60 sec; 1.5 x Pnom, 1 sec	
Nominal Output Voltage	220V/230V	
Nominal Frequency	50Hz/60Hz	
Nominal Output Current	16.0A	21.7A
THDv (@Linear Load)	< 3%	
Battery Data		
Battery Type	Lithium	
Nominal Battery Voltage	48V	
Max. Charge/Discharge Current	80A	100A
Communication with BMS	CAN	
Efficiency		
Max. Efficiency	97.8%	
Euro Efficiency	97.4%	
General Data		
Dimension (W*H*D)	415*625*155mm	
Weight	30kg	
Mounting Method	Wall-mounting Bracket	
Protection Rating	IP65	
Cooling	Natural Convection	
Operating Temperature Range	-25 °C ~+60 °C (>45 °C Derating)	
Max. Operating Altitude	2000m	
Noise	<25dB	
Relative Humidity	0~100%,No Condensation	
Display	LED & APP	
Communication	Wi-Fi/DRM/CAN/RS485	

Remarks: The range of output Voltage and frequency may vary depending upon different grid codes.