



Hybrid Inverter

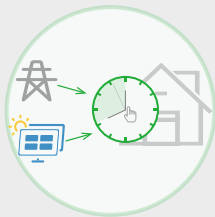
Three Phase: HP3-5K/6K/8K/10K/12K/15K/17K/20K D1

As the core of the energy storage solution, LIVOLTEK three phase hybrid inverter offering a flexible and scalable solution for both residential and commercial applications. With the ability to scalable battery storage, the high-voltage inverter facilitate powerful energy backup and also present high self-consumption with optimised built-in EMS to reduce energy cost. Furthermore, thanks to the multiple communication option in the inverter, external loads such as heat pumps can also be flexibly activated to optimize energy consumption.

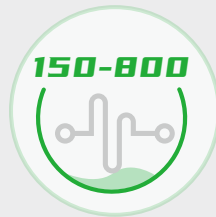


Features

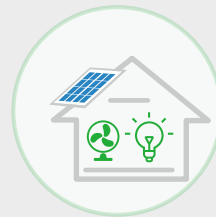
- 150% PV Oversize
- 100% Unbalance output
- Max. 20A DC input current per string
- Free online monitoring and maintenance
- Multi working modes for optimal performance
- UPS level switching time (<10ms) for critical loads



Flexible Setting for Charge



Voltage Range 150V-800V



Support Unbalance Load



Export Limitation

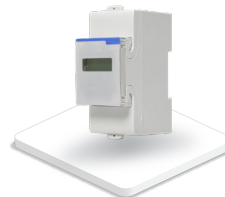
Compatible Products



Residential Lithium Battery



Wi-Fi Dongle



Smart Meter



Monitoring System

Specifications

Model	HP3-5KD1	HP3-6KD1	HP3-8KD1	HP3-10KD1	HP3-12KD1	HP3-15KD1	HP3-17KD1	HP3-20KD1	
PV Input Data									
Max. PV Input Power	7500Wp	9000Wp	12000Wp	15000Wp	18000Wp	22500Wp	25500Wp	30000Wp	
Max. PV Input Voltage	1000V								
Nominal DC Input Voltage	600V								
MPPT Voltage Range	150 V ~ 850 V								
No. of MPPTs/Strings per MPPT	2/1	2/1	2/1	2/1	2/1	2/1+2	2/2	2/2	
Max. Input Current	20/20A	20/20A	20/20A	20/20A	20/20A	20/32A	32/32A	32/32A	
Max. Short Circuit Current	30/30A	30/30A	30/30A	30/30A	30/30A	30/48A	48/48A	48/48A	
AC Output @ Grid									
Nominal AC Output Power	5000W	6000W	8000W	10000W	12000W	15000W	17000W	20000W	
Max. AC Input Power	7500W	9000W	12000W	15000W	18000W	22500W	25500W	30000W	
Nominal AC Voltage	3W+N+PE, 230/400V								
Nominal AC Voltage Range	360V~440V								
AC Frequency	50 Hz / 60 Hz								
Max. Output Current	8.5A	10.5A	13.5A	17.0A	21.5A	27.0A	20.0A	32.0A	
THDi, Rated Power	< 3%								
Power Factor	~1 (Adjustable from 0.8 Leading to 0.8 Lagging)								
EPS Output @ Off Grid									
Nominal EPS Power	5000W	6000W	8000W	10000W	12000W	15000W	17000W	20000W	
EPS Peak Power	1.1 x Pnom, 60sec								
Nominal Output Voltage	3W+N+PE, 230/400V								
Nominal Frequency	50 Hz/60 Hz								
Nominal Output Current	7.3A	8.7A	11.6A	14.5A	17.4A	21.8A	24.8A	29.0A	
Switching Time	< 3%								
Battery Data									
Battery Type	Lithium								
Battery Voltage Range	150V ~ 800 V								
Max. Charge/Discharge Current	30A/30A					50A/50A			
Communication with BMS	CAN/RS485								
Efficiency									
Max. Efficiency	98.1%	98.1%	98.2%	98.2%	98.3%	98.3%	98.3%	98.3%	
Euro Efficiency	97.5%	97.5%	97.5%	97.5%	97.6%	97.6%	97.8%	97.8%	
General Data									
Dimension (W*H*D)	560*430*250 mm								
Weight	20kg	20kg	23kg	23kg	23kg	29kg	29kg	29kg	
Mounting Method	Wall-mounted								
Protection Rating	IP65								
Cooling	Natural Convection			Intelligent Fan					
Operating Temperature Range	-25 °C~+60 °C								
Max. Operating Altitude	<4000m								
Noise	<40dB								
Relative Humidity	0~100%,No Condensation								
Display	LED & APP								
Communication	Wi-Fi/DRM/CAN/RS485								

Remarks: The range of output Voltage and frequency may vary depending upon different grid codes.